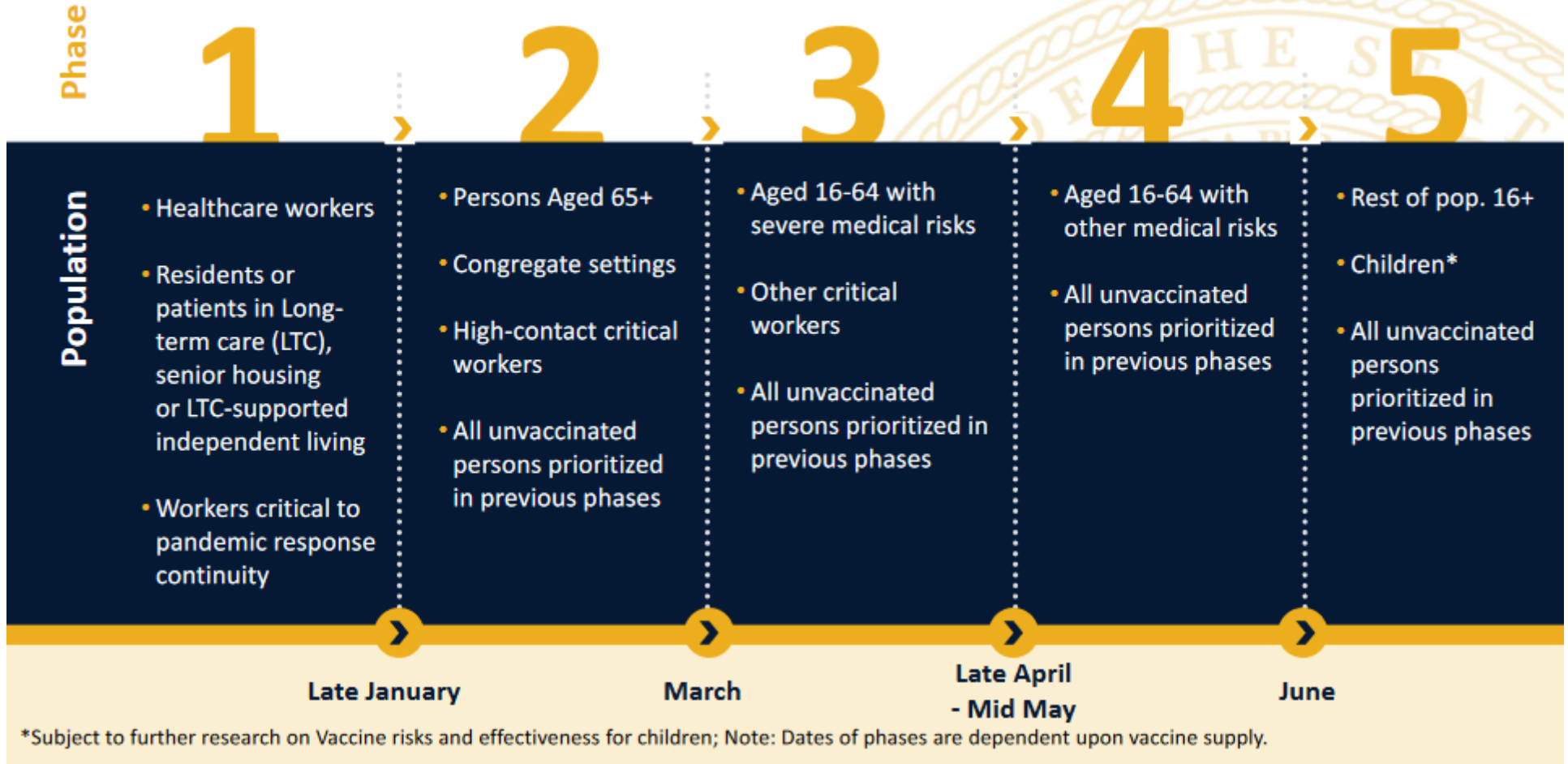


Kansas Vaccination Phases | By Population



The above chart can be found at <https://www.kansasvaccine.gov/DocumentCenter/View/120/Vaccine-Phase-Chart-PDF->

DICKINSON COUNTY is currently in Phase 1 and is working with KDHE to determine when Phase 2 vaccine will be available. When we have information about moving to another phase we will post information here on when, where, and how the people affected in that phase will need to respond. We currently are not taking any names for a list as we anticipate utilizing a different process to vaccinate our residents.